

## PEBBLETEX FINISHES

### PACKAGING

19 L (5 gal.) pail

### APPROXIMATE COVERAGE RATES

#### Natural Swirl texture:

12.0-12.6 m<sup>2</sup> (130-140 ft<sup>2</sup>) per pail

#### Mojave texture:

9.3-11.1 m<sup>2</sup> (100-120 ft<sup>2</sup>) per pail

#### Limestone texture:

13.0-13.5 m<sup>2</sup> (140-150 ft<sup>2</sup>) per pail

#### Finetex texture:

Varies depending on free-form application

#### Encausto Verona texture:

Varies depending on free-form application

Coverage rates will vary depending on job conditions, substrate absorbency, and application techniques.

### COLOR

Finestone Finishes are available in 64 Standard Colors. Unlimited custom colors are available upon request.

### GLOSS

Flat finish

### WORKING TIME

Approximately 10 minutes when applied over unprimed Finestone base coats at ambient conditions of 21° C (70° F), 50% relative humidity, and no wind. High temperature, low humidity, wind and/or high absorbency rates of the substrate shorten the working time of Finestone Pebbletex Finishes; low temperature and/or high humidity prolong their working time.

### DRYING TIME

Approximately 12 hours to firm set, depending upon the ambient weather conditions, substrate absorbency and applied film thickness. Protect newly applied finish from rain and temperatures less than 4° C (40° F) for at least 24 hours after application.

### STORAGE

Store in original containers at temperatures not less than 4° C (40° F) or greater than 43° C (110° F). Store out of direct sunlight and protect from weather. Do not stack pallets.

### SHELF LIFE

Approximately 2 years, properly stored in original containers.

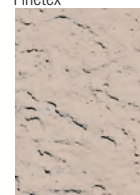
Mojave



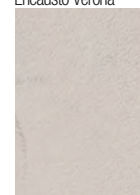
Limestone



Finetex



Encausto Verona



Natural Swirl

**FINESTONE PEBBLETEX FINISHES** are 100% acrylic polymer-based, textured finish coatings for Finestone Class PB and Class PM EIFS, Finestone Stucco Systems, Finescreen Cement-Board Stucco Systems and Acrylic Surfacing Systems for ICFs. They are also suitable for interior applications. Finestone Pebbletex Finishes offer a variety of textures and unlimited color options for design versatility.

# FINESTONE PEBBLETEX FINISHES

## ADVANTAGES

---

- Creamy consistency; trowels on easily
  - Unlimited colors available increases aesthetic design options
  - 100% acrylic polymer formula provides excellent adhesion, weather resistance, and durability
  - Resists UV deterioration and fading
  - Water-based; safe for workers and environment; easy clean up
- 

## RECOMMENDED USES

To provide an exterior finish coating for:

Finestone Pebbletex EIFS  
Finestone Stucco Systems  
Finestone Finescreen Cement Board  
Stucco Systems

Approved conventional stucco, masonry or concrete substrate

To provide an interior finish coating for approved interior gypsum board, plaster or prepared masonry

## LIMITATIONS

Do not use on flat horizontal surfaces exposed to weather.

Sloped surfaces must have a minimum slope of 6:12. Not recommended for large sloping surfaces greater than 30.5 cm (12").

Apply only when ambient and substrate temperatures will be at least 4° C (40° F) and higher for at least 24 hours.

Do not apply in direct sunlight. Applying in sunlight may result in cold joints or color variations.

Protect from rain for at least 24 hours.

Do not apply directly to exterior gypsum sheathing.

## MIXING

Finestone Pebbletex Finishes come premixed from the factory. At the time of use, stir the finish thoroughly to redistribute the aggregate, which tends to settle during shipping and storage.

For best results, stir at 400-500 rpm, using a heavy duty 13 mm (1/2") drill with a jiffler-type paddle (Goldblatt Jiffler Mixer No. 15311 H7 or similar).

Do not overstir. Excessive stirring may entrap too much air.

Finestone Pebbletex Finishes do not require thinning. To adjust workability, small amounts of clean, potable water, up to a maximum of 0.72 L (24 oz.) per 19-L (5-gal.) pail of finish, may be added. To avoid color variation, add the same amount of water to each pail.

Do not add accelerators, retarders or admixtures to Finestone Pebbletex Finishes.

**APPLICATION****Surface Preparation**

Substrates must be sound and free of paint, dirt, grease, oil, efflorescence, form release agents and curing compound.

Substrates must be free of surface irregularities and level within 6.4 mm in 3 m (1/4" in 10'). As necessary, repair cracks, pop-outs or voids and level unit masonry using a compatible product, such as Finestone Finebuild, and let repair material dry thoroughly before installing Finestone Pebbletex Finishes.

To stabilize substrate porosity, particularly of stucco brown coat, concrete, or masonry substrates, using a primer such as Tinted Primer or Stucco Prime, is recommended.

**Equipment**

Use a stainless steel plastering trowel.

Finestone Pebbletex Finishes may also be spray applied.

**Application Procedures**

Trowel the Finestone Pebbletex Finish over the prepared base coat or substrate at a thickness of approximately 1.6 mm (1/16"). Spread uniformly, then scrape down to a thickness equal to the size of the largest aggregate. Immediately float the finish to achieve the final texture.

Important: Always maintain a wet edge. Apply only what can be floated before the finish begins to form a surface film. To avoid unsightly color variations or cold joints, apply finish continually up to corners, joints or other natural breaks, and do not allow finish to stop or set up within an unbroken wall surface.

Protect from rain and from temperatures less than 4° C (40° F) for 24 hours.

**CLEAN UP**

Remove wet material from tools or other surfaces with soap and water. Dry material must be mechanically removed.

**Technical Support**

For further details, specifications, questions, specific recommendations, or the most recent product information, please consult BASF Wall Systems Technical Services: Toll-free 800-221-9255 or our website, [www.finestone.basf.com](http://www.finestone.basf.com).

## HEALTH AND SAFETY

### Caution

May be harmful if vapors or mist are inhaled, if absorbed through skin, or if swallowed. May cause eye, skin and respiratory tract irritation. Swallowing this product can cause kidney damage.

### Precautions

Avoid getting in eyes, on skin, or on clothing. Avoid breathing vapors or mist. Wear safety glasses or goggles, impervious gloves, and clothing with long sleeves and pants. If TLV or PEL can be exceeded, wear respirator selected by a technically qualified person. Wash thoroughly after handling. Wash contaminated clothing before reuse.

### Spills

Wipe up small spills with rags. Absorb larger spills with sand, vermiculite, or kitty litter; sweep up and place in a suitable container for disposal.

### First Aid

**Eyes:** For eye contact, rinse eyes with water. Remove any contact lenses, and continue flushing with plenty of water for several minutes. Seek medical attention if irritation develops and persists.

**Skin:** For skin contact, wash affected areas with plenty of water, and soap if available, for several minutes. Seek medical attention if irritation develops and persists.

**Internal:** If inhaled, remove from area to fresh air. Seek medical attention if respiratory irritation develops or if breathing becomes difficult. If swallowed, give 3-4 glasses of water, but do not induce vomiting unless directed to do so by a physician. Do not give anything by mouth to an unconscious or convulsing person. Get medical attention.

Read Material Safety Data Sheet before using this product.

**For medical emergencies only call CHEMTREC at (800) 424-9300.**

### WARRANTY

BASF warrants this product to be free from manufacturing defects and to meet the technical properties on the current Product Bulletin, if used as directed within shelf life. Satisfactory results depend not only on quality products but also upon many factors beyond our control. BASF MAKES NO OTHER WARRANTY OR GUARANTEE, EXPRESS OR IMPLIED, INCLUDING WARRANTIES OF MERCHANTABILITY OR FITNESS FOR A PARTICULAR PURPOSE WITH RESPECT TO ITS PRODUCTS. The sole and exclusive remedy of Purchaser for any claim concerning this product, including but not limited to, claims alleging breach of warranty, negligence, strict liability or otherwise, is shipment to purchaser of product equal to the amount of product that fails to meet this warranty or refund of the original purchase price of product that fails to meet this warranty, at the sole option of BASF. In the absence of an extended warranty issued by BASF, any claims concerning this product must be received in writing within one (1) year from the date of shipment and any claims not presented within that period are waived by Purchaser. BASF WILL NOT BE RESPONSIBLE FOR ANY SPECIAL, INCIDENTAL, CONSEQUENTIAL (INCLUDING LOST PROFITS) OR PUNITIVE DAMAGES OF ANY KIND.

Purchaser must determine the suitability of the products for the intended use and assumes all risks and liabilities in connection therewith. This information and all further technical advice are based on BASF's present knowledge and experience. However, BASF assumes no liability for providing such information and advice including the extent to which such information and advice may relate to existing third party intellectual property rights, especially patent rights, nor shall any legal relationship be created by or arise from the provision of such information and advice. BASF reserves the right to make any changes according to technological progress or further developments. The Purchaser of the Product(s) must test the product(s) for suitability for the intended application and purpose before proceeding with a full application of the product(s). Performance of the product described herein should be verified by testing and carried out by qualified experts.



For the most current version of this literature, please visit our website at [www.finestone.basf.com](http://www.finestone.basf.com).